

---

# THE ENERGY PARADOX

The Forbidden Truth About Why You're Exhausted  
(And the "Dangerous" Solution That Changes Everything)



**BIOSPARK  
HEALTH**

A Paradigm-Shifting Guide by

Dr. Steven Presciutti, MD

---

**BIOSPARK HEALTH**

Stop Fighting Your Biology.  
Start Feeding Your Cells.



---

## LEGAL INFORMATION


Copyright © 2024 Biospark Health

All rights reserved. No part of this publication may be reproduced, distributed, or transmitted in any form or by any means without the prior written permission of the publisher.

### Medical Disclaimer

This guide is for educational purposes only. It is not intended to diagnose, treat, cure, or prevent any disease. The information provided should not be used as a substitute for professional medical advice.

Always consult with a qualified healthcare practitioner before making any changes to your diet, supplement regimen, or lifestyle.

 Individual results may vary. Your journey is your own.

The paradox begins here: Everything you're about to read contradicts mainstream medical advice.

**That's precisely why it works.**



---

# CONTENTS

Your roadmap to cellular energy restoration

|   |    |
|---|----|
| The Confession That Changes Everything      | 4  |
| ● 1. The Energy Crisis No One Talks About   | 7  |
| ● 2. The Temperature Truth                  | 9  |
| ● 3. The Metabolism Myths Keeping You Stuck | 12 |
| ● 4. The Fat Paradox                        | 14 |
| ● 5. The Sugar Secret                       | 16 |
| ● 6. The Cellular Energy System             | 17 |
| ● 7. Your Path Forward                      | 19 |
| ● References & Further Reading              |    |

*"The paradox of health: Everything you've been taught creates the very exhaustion it claims to solve."*

— Dr. Steven Presciutti

# THE CONFESSION

That Changes Everything



BIOSPARK  
HEALTH

I need to confess something.

For the first decade of my medical career, I was part of the problem.

I told exhausted patients to "eat less and move more."

I prescribed antidepressants for fatigue.

I dismissed temperatures below 98°F as "normal variation."

I recommended vegetable oils for heart health.

**I was wrong. About everything.**

The turning point came when I couldn't ignore my own exhaustion anymore. Despite following every "healthy" protocol I preached, I was tired, cold, and gaining weight eating 1,500 calories a day.

That's when I discovered the paradox that changed everything:

**The "healthy" advice we follow is creating the very exhaustion it claims to solve.**

This guide reveals what I learned—truths so contrary to conventional wisdom that most doctors refuse to consider them. Yet the science is undeniable. The results, even more so.

## Your 10-Second Metabolic Test

Before we go further, I need you to do something tomorrow morning.

The moment you wake up—before you even sit up—take your temperature.

This single number reveals more about your metabolism than any blood test.

### What Your Temperature Means:

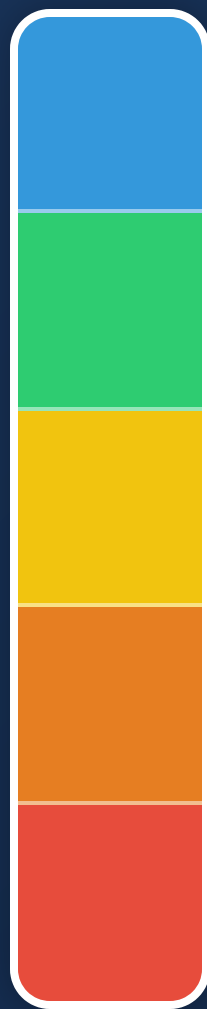
We'll explore this in detail on the next page...

*The answer isn't what you think.*

**In fact, it's the opposite.**

# THE 10-SECOND METABOLIC TEST

Your Body Temperature Reveals What Labs Miss



## Temperature Range Meanings

- 98.6°F+**  
Optimal - Abundant Cellular Energy
- 98.0-98.5°F**  
Good - Room for Improvement
- 97.5-97.9°F**  
Subclinical Hypothyroid
- 97.0-97.4°F**  
Clear Metabolic Suppression
- Under 97.0°F**  
Cellular Energy Crisis

## Taking Your Temperature Correctly

### Morning Instructions:

- 1 Place thermometer under your tongue **immediately upon waking** — before sitting up, checking your phone, or even moving significantly.
- 2 Leave in place for **3 full minutes** (oral thermometer) or until final beep **plus one extra minute** (digital thermometer).
- 3 Record your temperature daily for at least a week to establish your pattern.

## Why Temperature Matters More Than Labs

Your body temperature is the ultimate metabolic speedometer. It directly reflects how much energy your cells are producing. No interpretation needed. No population averages. Just pure biological truth.

### High Temperature (98.6°F+) Indicates:

- Robust cellular energy production
- Efficient fuel burning
- Active thyroid hormone
- Low stress hormones
- Optimal enzyme function

### Low Temperature (Under 98°F) Indicates:

- Sluggish metabolism
- Poor fuel utilization
- Thyroid hormone resistance
- High stress hormones
- Impaired enzyme function

### **i** The Lab Test Paradox

You can be "normal" on thyroid lab tests (TSH, T4, T3) and still be profoundly hypothyroid at the cellular level. Your temperature never lies.

Trust what your body is telling you, not what the lab ranges say is "normal."

# A LETTER FROM DR. STEVEN



Dear Friend,

If you're reading this, you're probably exhausted.

Not just tired. **Exhausted** in a way that sleep doesn't fix. The kind where you wake up already behind, push through your day on willpower and caffeine, then collapse into bed wondering if this is just life now.

Your doctor says your labs are "normal."

Your fitness tracker says you're doing everything right.

Your diet is "perfect"—lots of vegetables, lean protein, healthy oils.

Yet you're gaining weight eating like a bird. Your hands and feet are ice blocks. Your brain feels wrapped in cotton. And that 3pm crash hits like clockwork.

Here's what nobody will tell you:

**You're not tired because you're lazy, old, or broken.  
You're tired because your cells are literally starving for  
energy.**

Not calories. **ENERGY.**

There's a massive difference, and understanding it changes everything.

Over the next few chapters, I'm going to show you:

- ✔ Why the foods you think are healthy are poisoning your cells
- ✔ How eating MORE of the "dangerous" foods speeds up fat loss
- ✔ The underground science that explains your exhaustion perfectly
- ✔ Why your symptoms are intelligent adaptations, not failures

Fair warning: This will challenge everything you believe about health.

But if you're ready to stop fighting your body and start feeding your cells...

Turn the page.

Your energy is waiting.

**Dr. Steven Presciutti**

Dr. Steven Presciutti, MD  
Founder, Biospark Health

**P.S. Take  
your  
temperature  
tomorrow  
morning.**

# CHAPTER 1

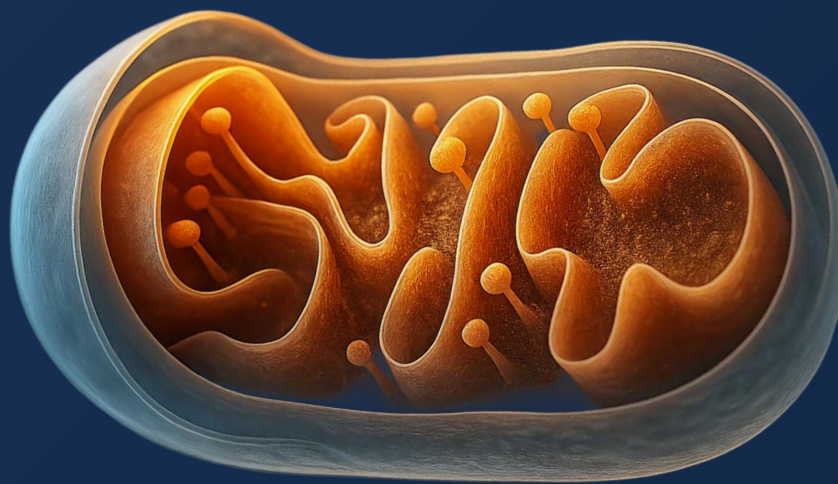
## THE ENERGY CRISIS NO ONE TALKS ABOUT



Imagine your body as a collection of trillions of cells, each with its own tiny power plants: mitochondria.

When these mitochondria function efficiently, your body thrives—bright, warm, energized.

But what happens when they can't get proper fuel?



**System-wide brown-outs. Emergency power rationing. Critical functions only.**

That's exactly what's happening in your body right now.

### The Survival State

In cellular energy crisis, your body makes intelligent adaptations:

- Lowers body temperature**  
Conservation mode to save precious energy
- Reduces mental clarity**  
Limits non-essential cognitive functions
- Stores fat**  
Prepares for perceived energy famine
- Prioritizes vital organs**  
Sacrifices peripheral circulation

*Sound familiar?*

### The Paradox Revealed

Here's where it gets interesting:

The very strategies we use to "get healthy" often push us deeper into energy crisis:

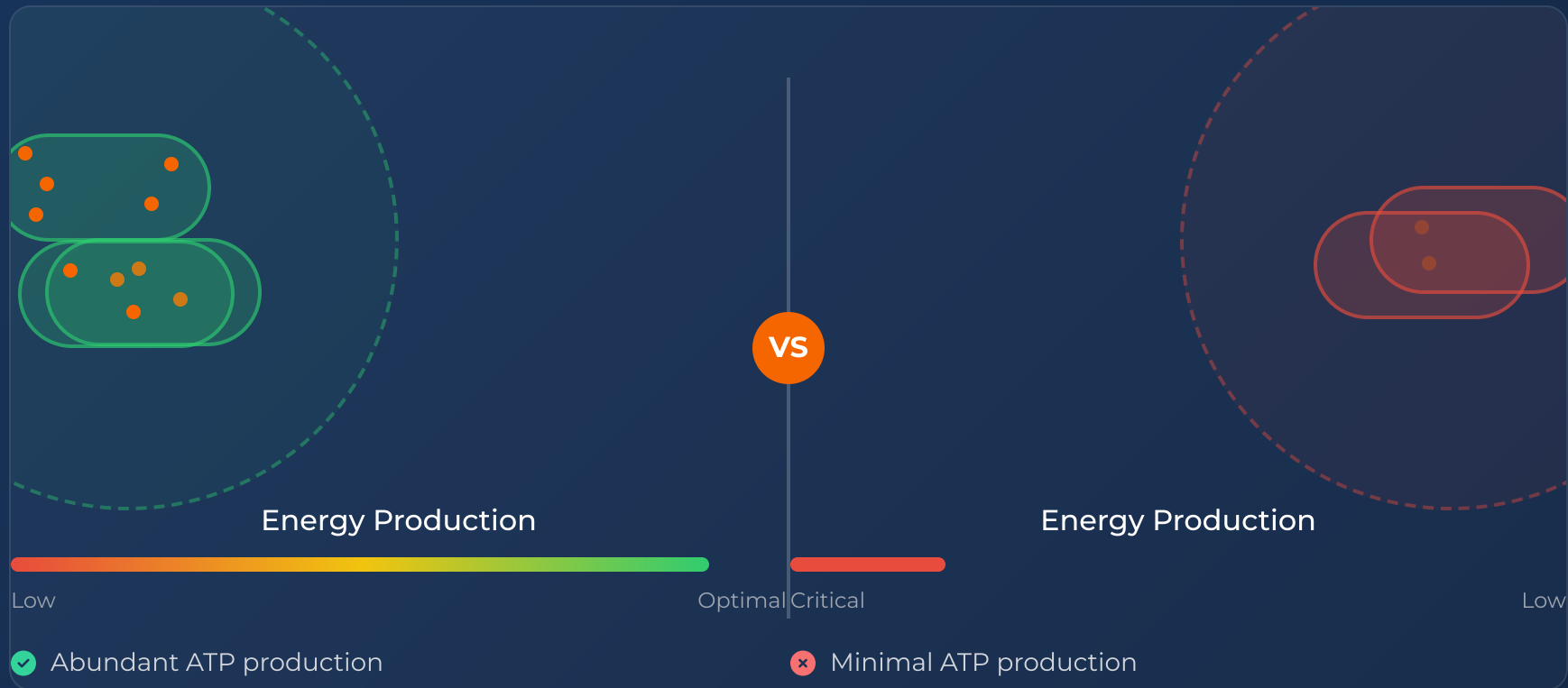
- Restricting calories** signals famine → Metabolism slows further
- Avoiding carbs** deprives cells of preferred fuel → Stress hormones rise
- Intense exercise** increases energy demands → Deepens energy deficit
- "Healthy" oils** block cellular respiration → Energy production crashes

**We're literally creating the exhaustion we're trying to solve.**

But there's hope when you understand what your cells actually need.

# THE HIDDEN ENERGY CRISIS

How Modern Health Practices Starve Your Cells



## When Cellular Energy Fails, Systems Shut Down

Just as a city experiencing power shortages must prioritize essential services, your body intelligently adapts to low cellular energy:

### Brown-outs. Emergency rationing. Systems shutting down.

This is exactly what's happening in your body right now.

#### Brain Fog

Limited energy prioritizes essential brain functions only. Creative thinking and focus are sacrificed.

#### Cold Extremities

Low energy forces your body to restrict circulation to non-essential areas to preserve core temperature.

#### Weight Gain

Energy crisis triggers fat storage as a survival adaptation, preparing for perceived famine.

#### Fatigue

Your body's obvious signal that cellular energy production is compromised and conservation is needed.

#### Afternoon Crashes

Daily rhythm of stress hormone depletion reveals the underlying energy deficit, typically around 3pm.

#### Stress Sensitivity

With minimal energy reserves, even small stressors can trigger major hormonal cascades.

## The Energy Paradox Revealed

The very strategies we use to "get healthy" are often the ones creating our energy crisis:

- ✗ Restricting calories signals famine → Metabolism slows
- ✗ Avoiding carbs deprives cells of preferred fuel → Stress hormones rise
- ✗ Using vegetable oils blocks cellular respiration → Energy production crashes
- ✗ Intense exercise with poor fueling → Deepens energy deficit

# CHAPTER 2: THE TEMPERATURE TRUTH

Why Your Morning Temperature Reveals More Than Any Blood Test



## "Your thyroid is normal."

If I had a dollar for every time a patient heard this while sitting in my office with a temperature of 96.5°F...

### The Great Lab Range Deception

Modern medicine uses population averages to define "normal." But here's the paradox:

As the population gets sicker, "normal" ranges expand to include dysfunction.

Current "normal" TSH range:

0.5-5.0

Based on population averages

Optimal TSH for energy:

Under 2.0

Based on symptom resolution

Current "normal" temperature:

97.0-99.0°F

Modern average (declining)

Optimal temperature for life:

98.6°F

Historical human standard

See the problem?

You can be "normal" and still be profoundly hypothyroid at the cellular level.

### Temperature Comparison



"Normal" Range

Metabolic Reality

### The Broda Barnes Discovery

In the 1970s, Dr. Broda Barnes made a revolutionary discovery:

*Basal body temperature was more accurate at diagnosing hypothyroidism than any blood test.*

He successfully treated thousands of patients based on temperature and symptoms alone, ignoring "normal" lab results.

The medical establishment buried his work.

#### The Paradox of "Normal" Labs: Sarah's Story

Sarah came to me with classic hypothyroid symptoms:

- Exhaustion despite 8+ hours of sleep
- Weight gain eating 1,200 calories
- Hair falling out
- Depression
- Constipation

Her TSH: **2.8** ("perfectly normal")

Her temperature: **96.2°F** (severe cellular hypothyroidism)

*Her doctor offered antidepressants.*

We focused on raising her temperature instead:

- Added carbohydrates to each meal
- Replaced vegetable oils with butter
- Added sea salt to food
- Included orange juice daily

Six weeks later:

- Temperature: **98.6°F**
- Energy restored
- Lost 18 pounds eating 2,200 calories
- Mood lifted
- Digestion normalized

**No medication needed. Just cellular support.**

### The Million Dollar Question

If temperature is so important, why don't doctors check it?

Simple: There's no money in it.

You can't patent temperature. You can't bill insurance for telling someone to check it daily. And most importantly—it would reveal that millions of people diagnosed as "normal" actually need help.

**Your morning temperature doesn't lie. Trust it more than any lab test.**

# TEMPERATURE COMPARISON

## Normal vs. Optimal: The Truth About Your Morning Temperature

Modern medicine has redefined what's "normal" based on declining population averages. But there's a crucial difference between "common" and "optimal" when it comes to your body temperature.



Modern "Normal" Range

Based on population averages



Metabolic Reality

Based on cellular function

### When Labs Say "Normal"

Modern medicine uses TSH reference ranges of 0.5-5.0 mIU/L, which have widened as the population has become more metabolically dysfunctional.

- ✗ Ignores actual cellular energy production
- ✗ Misses subclinical hypothyroidism
- ✗ Leads to untreated symptoms
- ✗ Based on population averages, not optimal health

### When Temperature Shows Truth

Temperature directly reflects metabolic rate and cellular energy production, regardless of what blood tests suggest.

- ✓ Reveals actual thyroid hormone function at the cellular level
- ✓ Shows energy production capacity
- ✓ Corresponds directly with symptom improvement
- ✓ Provides actionable feedback for interventions

### Case Example: Sarah's Transformation

Before:

**TSH:** 2.8 (Within "normal" range)

**Temperature:** 96.2°F (Severe metabolic suppression)

Doctor's recommendation: Antidepressants

After Bioenergetic Support:

**Temperature:** 98.6°F (Optimal metabolism)

**Energy:** Restored

**Weight:** Lost 18 pounds eating 2,200 calories

No medication needed. Just cellular support.



BIOSPARK  
HEALTH

"Your morning temperature doesn't lie.  
Trust it more than any lab test."

— Dr. Steven Presciutti, MD

# TAKING YOUR TEMPERATURE

## The Right Way



### 3-Step Morning Protocol

#### 1 Perfect Timing

Take your temperature **immediately upon waking** — before sitting up, checking your phone, or even moving significantly.

##### 💡 Why it matters:

This captures your true basal metabolic state, before any activity influences your reading.

#### 2 Proper Placement

Place thermometer **under your tongue** toward the back (sublingual pocket).

- ✔ Close mouth completely and breathe through your nose
- ✔ Keep mouth closed the entire time
- ✔ Remain still until reading is complete

#### 3 Timing & Consistency

For accurate readings:

- 🕒 **Oral thermometer:** Leave in place for 3 full minutes
- 🕒 **Digital thermometer:** Wait for final beep + 1 extra minute

##### ★ PRO TIP: Digital Thermometer Issues

Digital thermometers often read too quickly and show falsely low temperatures. Always wait an extra minute after the beep for maximum accuracy.

### 7-Day Temperature Tracker

| Day       | Morning Temp (°F) | Notes (energy, sleep, mood) |
|-----------|-------------------|-----------------------------|
| Monday    |                   |                             |
| Tuesday   |                   |                             |
| Wednesday |                   |                             |
| Thursday  |                   |                             |
| Friday    |                   |                             |
| Saturday  |                   |                             |
| Sunday    |                   |                             |
| Average:  |                   |                             |

Track for at least 7 days to establish your pattern

### Why Daily Tracking Matters

Your morning temperature isn't just a number—it's a direct window into your metabolic health. Patterns tell the story:

- 📈 **Rising trend =** Improving metabolism
- 📉 **Falling trend =** Metabolic stress
- 🔄 **High variability =** Hormonal fluctuation
- ⚖️ **Stable & low =** Chronic energy deficit

#### ♀ For Women: Cycle Awareness

Your temperature naturally fluctuates with your menstrual cycle:

- Lowest during menstruation
- Rises after ovulation (~0.5°F)
- Note your cycle phase when tracking

Even with these fluctuations, average temperatures below 98°F still indicate potential metabolic issues.

“Your temperature is the ultimate metabolic speedometer — more accurate than any lab test, and completely within your control to change.”

— Dr. Steven Presciutti

# CHAPTER 3

## THE METABOLISM MYTHS

### KEEPING YOU STUCK



Everything you know about metabolism is backwards.

I don't say that lightly. But after seeing thousands of patients fail on conventional advice, then thrive doing the opposite, I can't stay silent.

Let's destroy the myths one by one.

#### **Myth #1: "Slow Metabolism is Genetic/Age-Related"**

Studies show metabolic rate is highly responsive to environmental inputs—not fixed by genetics or age.

#### **Myth #2: "Eat Less, Move More"**

The more you restrict and exercise, the more your metabolism slows to match. Your body is smarter than any diet.

#### **Myth #3: "Carbs Make You Fat"**

Populations with the highest carb intake often have the lowest obesity rates. Glucose is your cells' preferred fuel.

#### **Myth #4: "Breakfast is Optional"**

Skipping breakfast to "burn fat" actually programs your body to store it by elevating stress hormones.

#### **Myth #5: "Fasting Boosts Metabolism"**

While acute fasting can provide benefits, chronic fasting is metabolic suicide, suppressing thyroid and raising stress hormones.

### **💡 The Master Myth**

All these myths stem from one master misconception:

**"The body is a machine that runs on willpower."**

No. Your body is an intelligent organism that adapts to everything you do.

#### **Fight it with restriction and stress?**

It fights back with slowed metabolism and fat storage.

#### **Support it with adequate fuel and safety signals?**

It rewards you with abundant energy and effortless leanness.

*The choice is yours.*

# DESTROYING THE MYTHS

## Metabolism Truths vs. Popular Misconceptions



Conventional wisdom about metabolism is riddled with misconceptions. Let's examine the most damaging myths and replace them with evidence-based truth.

### ✘ MYTH

#### "Slow Metabolism is Genetic or Age-Related"

Your metabolic rate is predetermined by your genes or declines inevitably with age. Nothing you can do about it.

VS

### ✔ TRUTH

#### Metabolism is Highly Responsive

Your metabolism responds dynamically to environmental inputs. Studies show metabolic rate can increase significantly within days of proper nutritional support.<sup>1</sup>

Most "slow metabolisms" are **adaptations to chronic undereating**, nutrient deficiencies, or sustained stress.

### ✘ MYTH

#### "Eat Less, Move More"

Weight loss is simple: create a caloric deficit by eating less and exercising more.

VS

### ✔ TRUTH

#### Your Body Adapts to Deficits

When you create a large energy deficit, your body intelligently adapts by:<sup>2</sup>

- Lowering thyroid hormone production
- Raising stress hormones
- Reducing metabolically active tissue
- Increasing fat storage efficiency

**Sustainable fat loss requires raising metabolic rate**, not forcing a deficit.

### ✘ MYTH

#### "Carbs Make You Fat"

Carbohydrates spike insulin, which automatically leads to fat storage and weight gain.

VS

### ✔ TRUTH

#### Glucose is Cellular Fuel

Populations with the highest carb intake often have the lowest obesity rates.<sup>3</sup> When you deprive cells of glucose:

- Stress hormones rise to maintain blood sugar
- Thyroid function decreases (needs glucose)
- Metabolism slows (conservation mode)

**The right carbs in the right context are metabolic medicine**, not the enemy.

<sup>1</sup> Spaulding, S.W. et al. (1976) "Effect of caloric restriction and dietary composition on serum T3 and reverse T3 in man" J Clin Endocrinol Metab

<sup>2</sup> Fothergill, E. et al. (2016) "Persistent metabolic adaptation 6 years after The Biggest Loser competition" Obesity

<sup>3</sup> Hite, A.H. et al. (2011) "Low-carbohydrate diet review" Nutrition & Metabolism

# THE FAT PARADOX

## The "Dangerous" Food That's Actually Protective

In 1961, the American Heart Association told us to replace butter with vegetable oil.

In 1976, a scientist who questioned this was professionally destroyed.

In 2024, we're living with the consequences.

### The Assassination of John Yudkin

Dr. John Yudkin was a brilliant British nutritionist who published research suggesting that sugar, not saturated fat, might be linked to heart disease. But he made a fatal error: he also showed that polyunsaturated fats (vegetable oils) were more harmful than saturated fats.

The vegetable oil industry couldn't let this stand. They funded opposing research, pressured journals, and destroyed his reputation so thoroughly that his book "Pure, White and Deadly" was pulled from shelves. Yudkin died broken and discredited. Forty years later, his research has been validated—but the damage was done.

### The Great Fat Deception

#### METABOLIC MEDICINE

Fats Your Cells Actually Need

- ✓ **Butter**  
Butyric acid heals gut lining
- ✓ **Coconut Oil**  
MCTs for instant energy
- ✓ **Ghee**  
Concentrated nutrition
- ✓ **Beef Tallow**  
Ancestral energy source

#### METABOLIC POISON

Fats That Destroy Cellular Energy

- ✗ **Canola Oil**  
Engineered in a lab
- ✗ **Soybean Oil**  
In everything processed
- ✗ **Corn Oil**  
Inflammatory cascade
- ✗ **Vegetable Oil Blends**  
Hidden in most packaged foods

### The Science They Don't Want You To Know

Saturated fats are:

- Stable (don't oxidize in your body)
- Structural (build healthy cell membranes)
- Hormonal (precursors to protective hormones)
- Metabolic (support thyroid function)

PUFAs (vegetable oils):

- Break down into toxic aldehydes
- Suppress thyroid function by 30-40%
- Block glucose metabolism
- Accumulate in tissues for YEARS

*"The solution isn't in a pharmacy.  
It's in your kitchen."*

# THE SATURATED FAT SCIENCE

Why Everything You've Been Told Is Backwards



## Why Saturated Fats Heal

### Mechanisms of Protection

- Mitochondrial Integrity:** Provides stable lipids for cellular membranes that resist oxidation
- Metabolic Support:** Enhances thyroid hormone conversion and cellular receptor sensitivity
- Hormonal Foundation:** Provides cholesterol needed for steroid hormone production
- Brain Function:** Over 60% of brain tissue is made of fat, predominantly saturated

## Why PUFAs Harm

### Mechanisms of Damage

- Lipid Peroxidation:** Readily oxidize forming toxic byproducts that damage mitochondria<sup>1</sup>
- Thyroid Suppression:** Block T3 binding to nuclear receptors, reducing metabolic rate by 30-40%<sup>2</sup>
- Inflammatory Cascade:** Converts to pro-inflammatory eicosanoids, driving chronic inflammation
- Persistent Tissue Storage:** Remains in tissue for years, creating ongoing metabolic interference<sup>3</sup>

## Stability Comparison

| Fat Type    | Oxidation Risk | Heat Stability |
|-------------|----------------|----------------|
| Butter/Ghee | Very Low       | High           |
| Coconut Oil | Minimal        | Very High      |
| Canola Oil  | High           | Poor           |
| Soybean Oil | Very High      | Very Poor      |

## The 30-Day Great Fat Swap

### Week 1: Eliminate

Remove all vegetable oils, margarine, and processed foods containing PUFAs. Check labels for: canola, soybean, corn, sunflower, safflower, and "vegetable" oils.

### Week 2: Replace

Cook exclusively with butter, coconut oil, and ghee. Use olive oil only cold (dressings, finishing). Add 1 tbsp coconut oil to morning beverage.

### Week 3: Restaurant Strategy

Avoid fried foods when dining out. Request butter instead of vegetable oil for cooking. Choose grilled, steamed or roasted instead of fried.

### Week 4: Maintenance & Assessment

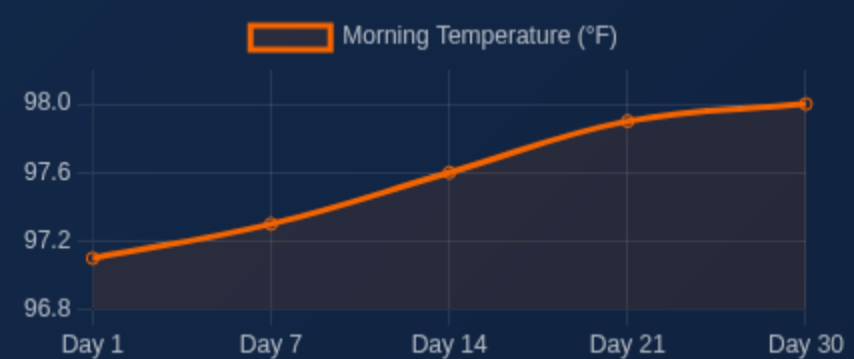
Continue fat swap while tracking: morning temperature, energy levels, mental clarity, and joint comfort. Note improvements as PUFA levels decrease.

## Case Study: Michael's Experience

"I was skeptical about eating more saturated fat, but within days of removing vegetable oils, my afternoon brain fog lifted. By week 3, my morning temperature had risen from 97.1°F to 98.0°F, and I felt warm for the first time in years."

— Michael, 42, Software Engineer

### Michael's Morning Temperature Changes



### Before Fat Swap

- Low energy, especially afternoons
- Cold hands and feet
- Brain fog after meals
- Poor sleep quality

### After 30 Days

- Steady energy throughout day
- Improved temperature regulation
- Mental clarity and focus
- Deep, restorative sleep

## The Great Fat Swap

### ELIMINATE:

- ✗ Canola oil
- ✗ Soybean oil
- ✗ Corn oil
- ✗ Sunflower oil
- ✗ Margarine

### EMBRACE:

- ✓ Butter/Ghee
- ✓ Coconut oil
- ✓ Tallow/Lard
- ✓ Olive oil (unheated)
- ✓ Cocoa butter

<sup>1</sup> Ayala, A. et al. (2014) "Lipid Peroxidation: Production, Metabolism, and Signaling Mechanisms of Malondialdehyde and 4-Hydroxynonenal" - Oxidative Medicine and Cellular Longevity

<sup>2</sup> Spaulding, S.W. et al. (1976) "Effect of caloric restriction and dietary composition on serum T3 and reverse T3 in man" - Journal of Clinical Endocrinology & Metabolism

<sup>3</sup> Mortensen, M.S. et al. (2023) "Polyunsaturated Fatty Acids Drive Lipid Peroxidation during Ferroptosis" - Developmental Cell

# CHAPTER 5

# THE SUGAR SECRET

The Sweetest Paradox of All



This chapter will destroy everything you believe about sugar.  
Good. Because what you believe is killing you.

## The Ultimate Metabolic Paradox

We have an obesity epidemic NOT because we eat too much sugar, but because we can't metabolize the sugar we eat.

The problem isn't sugar. It's broken cellular machinery that can't use sugar properly.

## What Actually Breaks Sugar Metabolism:

-  **Polyunsaturated Fats (PUFAs)**  
Block glucose metabolism at the cellular level
-  **Chronic Stress**  
Diverts glucose to stress response pathways
-  **Low Thyroid Function**  
Can't efficiently utilize glucose
-  **Nutrient Deficiencies**  
Missing co-factors required to process glucose

## Real Client Results:

BEFORE  
**96.8°F**  
Morning Temperature

Added: Orange juice, honey, fruit daily  
Lost 11 pounds in 30 days

AFTER  
**98.4°F**  
Morning Temperature

*"When I started adding orange juice, honey, and more carbs, my doctor was horrified. But my energy skyrocketed, my cold hands and feet warmed up, and the weight started coming off without hunger or restriction."*

— Sarah M., 38

## Context Is Everything:

### SUGAR + PUFA = DISASTER

The oils block glucose metabolism, forcing sugar into fat storage.

### SUGAR + SATURATED FAT = MEDICINE

Cells can use glucose efficiently, supporting energy production.

# CHAPTER 6: THE CELLULAR ENERGY SYSTEM

How Your Cells Power Your Life

## The Energy Equation

In every cell, every second, this reaction occurs:



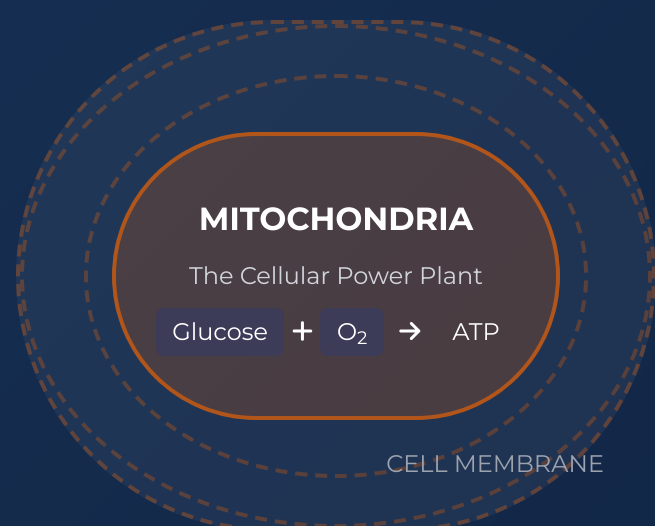
### When This Runs Efficiently:

- ✓ ATP powers every cellular function
- ✓ CO<sub>2</sub> improves oxygen delivery
- ✓ Water hydrates from within
- ✓ Heat maintains optimal temperature

### When It's Broken:

- ✗ Low ATP = exhaustion
- ✗ Lactic acid replaces CO<sub>2</sub> = poor oxygen delivery
- ✗ Dehydration at cellular level
- ✗ Low temperature = slowed metabolism

## Inside Your Cellular Power Plant



### Energy Powers Everything:

- 🧠 Brain Function
- ❤️ Heart Pumping
- 🫁 Breathing
- 🏃 Movement

## The Metabolic Bottlenecks

Three things can break this system:

### 1. Fuel Problems

- ❗ Insufficient glucose → Stress hormone release
- ❗ Wrong fats (PUFA) → Mitochondrial dysfunction
- ❗ Poor protein balance → Inefficient processing

💡 Fix: Adequate carbs + saturated fats

### 2. Conversion Problems

- ❗ Low thyroid → Slow metabolism
- ❗ Nutrient deficiencies → Enzymes can't function
- ❗ Toxic load → System overwhelm

💡 Fix: Thyroid support + minerals

### 3. Utilization Problems

- ❗ Insulin resistance → Glucose can't enter cells
- ❗ Mitochondrial damage → Can't produce ATP
- ❗ Chronic stress → Energy diverted to survival

💡 Fix: Stress reduction + salt

# THE CELL FEEDING PROTOCOL

The Four Pillars of Cellular Energy



## The Four Pillars of Cellular Energy

### PILLAR 1: GLUCOSE

The Preferred Cellular Fuel



Your brain alone uses 120g of glucose daily. Deprive it, and it will break down your tissue to get it.

#### Optimal Sources:

- ✓ Ripe fruit
- ✓ White rice
- ✓ Raw honey
- ✓ Orange juice

### PILLAR 2: OXYGEN

The Energy Catalyst



We breathe all day but cells suffocate when CO<sub>2</sub> levels are too low, preventing oxygen delivery.

#### Optimization Strategy:

- ✓ Improve glucose metabolism for proper CO<sub>2</sub>
- ✓ Gentle movement, not exhaustive exercise
- ✓ Proper mineral balance enhances oxygen delivery

### PILLAR 3: THYROID

The Metabolic Accelerator



"Normal" thyroid labs mean nothing if the hormone can't act at the cellular level.

#### Thyroid Supporters:

- ✓ Coconut oil
- ✓ Adequate carbs
- ✓ Egg yolks
- ✓ Low stress

### PILLAR 4: MINERALS

The Cellular Spark Plugs

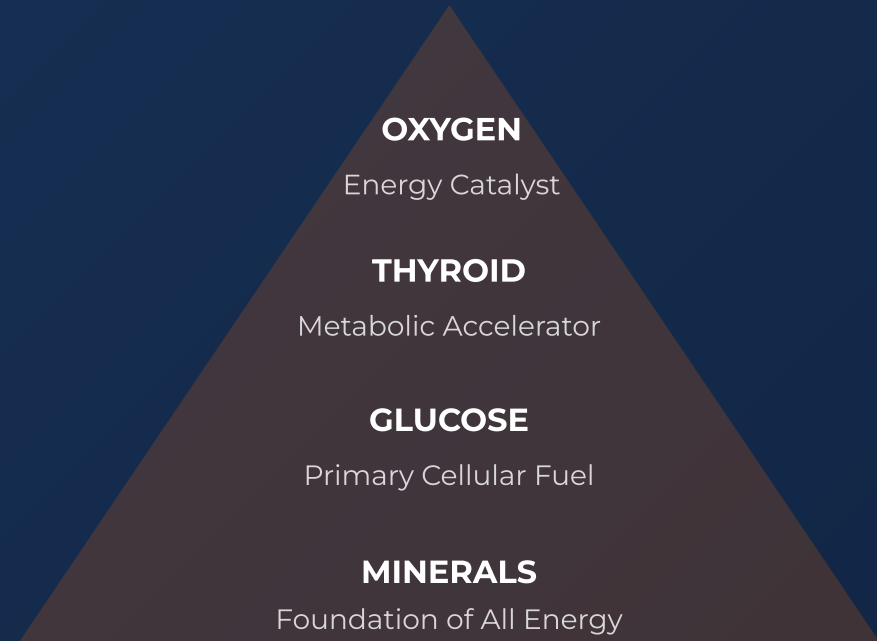


We restrict salt while our cells dehydrate. Minerals are critical enzyme cofactors.

#### Critical Minerals:

- ✓ SODIUM: Energy gradient
- ✓ CALCIUM: Cell regulator
- ✓ MAGNESIUM: ATP production
- ✓ POTASSIUM: Cellular pumps

## The Energy Paradox Pyramid



### Daily Protocol Timeline

#### Morning

Protein + carbs + salt within 30 minutes of waking

Example: Eggs + white rice + orange juice + salt

#### Mid-Morning

Fruit + cheese (minerals + sustained glucose)

#### Lunch

Balanced meal with all four pillars

Meat + potato + vegetables + butter

#### Afternoon

Milk + honey (thyroid support + glucose)

#### Evening

Warm milk + honey before bed

Prevents overnight stress hormone surge

### The Ultimate Paradox

By eating MORE of the right foods, you'll:

- ✓ Lose fat easier
- ✓ Sleep better
- ✓ Have more energy
- ✓ Think clearer

Not fighting biology. Supporting it.

# YOUR PATH FORWARD

From Knowledge to Transformation



You now know the truth. The question is: What will you do with it?

## 1 Assessment

- 📌 Take your temperature daily
- 📊 Map your energy patterns
- 🔍 Identify metabolic blockers
- 👉 Begin the great oil swap

## 2 Foundation

- ⚙️ Implement morning protocol
- 🍏 Add strategic carbohydrates
- 🍖 Include saturated fats
- 🧂 Salt your food to taste

## 3 Optimization

- 🕒 Fine-tune meal timing
- 👥 Add targeted supporters
- 🚫 Reduce environmental stressors
- 📝 Track improvements

## 4 Integration

- 🔄 Make it sustainable
- 👤 Adjust for your lifestyle
- 🔄 Notice what's changed
- 📅 Plan your future

## The Resistance You'll Face

### Medical Resistance

Your doctor may not understand these principles. Trust your results.

### Social Pressure

Family and friends might worry about your "dangerous" food choices.

### Diet Culture

The wellness industry profits from keeping you confused and restricted.

### Internal Resistance

Your own programming will resist. This is normal—all paradigm shifts face resistance.

## Your Next Action: The 5-Day Energy Reset

This guide revealed the WHY behind your exhaustion. But knowledge without action creates no change.



That's why I created the 5-Day Energy Reset—a step-by-step protocol that transforms theory into practice. It will arrive in your inbox soon.

For now, do this:

1. Take your temperature tomorrow morning
2. Notice which paradoxes resonated most
3. Choose one change to make this week
4. Trust your body's wisdom

[Watch For Your 5-Day Reset Email](#)

## The Ultimate Truth

You're not broken.

You're not weak.

You're not destined for exhaustion.

You're a magnificent biological system that's been given the wrong fuel and bad instructions.

**Change the fuel. Question the instructions. Watch your life transform.**

To your cellular revolution,

**Dr. Steven Presciutti, MD**



BIOSPARK HEALTH

Remember: Every degree your temperature rises represents millions of cells coming back online.

**You've got this.**